



KIPULA^{1.0}

Physical Assets Management Advanced Tool

The assets Management Revolution

A NEW FOCUS ON PHYSICAL ASSETS MANAGEMENT

2014 welcomes ISO 55000 norm. This international standard, based on BS PASS55:2008, establishes the criteria and the best practices to be followed in the physical assets management.

Kipula is a powerful web application that is developed to manage the life cycle activities of the physical assets of any industrial process or any infrastructure.

It offers the ideal support of an ambitious objective: ISO 55000 Norm Certification.



ISO 55000

- Corrective Maintenance
- Preventive Maintenance
- Condition Based Maintenance
- Purchasing Management
- Stores Management

- Policy, Strategy, Objectives and Plans in physical asset management
- Critical Asset Register
- Criticality Analysis
- Medium and Long term plan of Physical asset
- Risk Management
- Management of Change
- Enablers
- Integration of information
- Life Cycle cost of the assets



OBJECTIVES

Optimize technically and economically the physical assets management

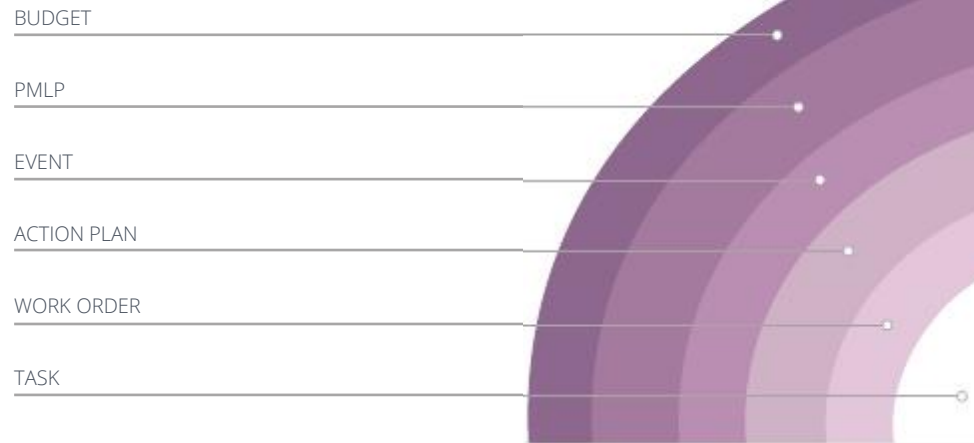
Reach a higher level of assets management

Improve the assets operation from the energetic and environmental point of view

Remove the breaks in information transmission providing all needed relevant information of the physical assets to the management to take strategic decisions related to the business continuity

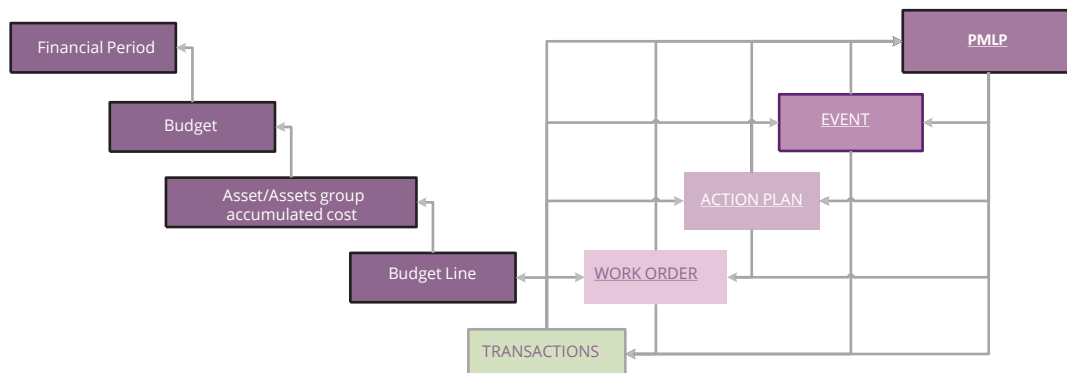
STRUCTURE

Under a model of “layers”, it incorporates information entities that are necessary to carry out an advanced, optimized and efficient management of physical assets of any productive process.



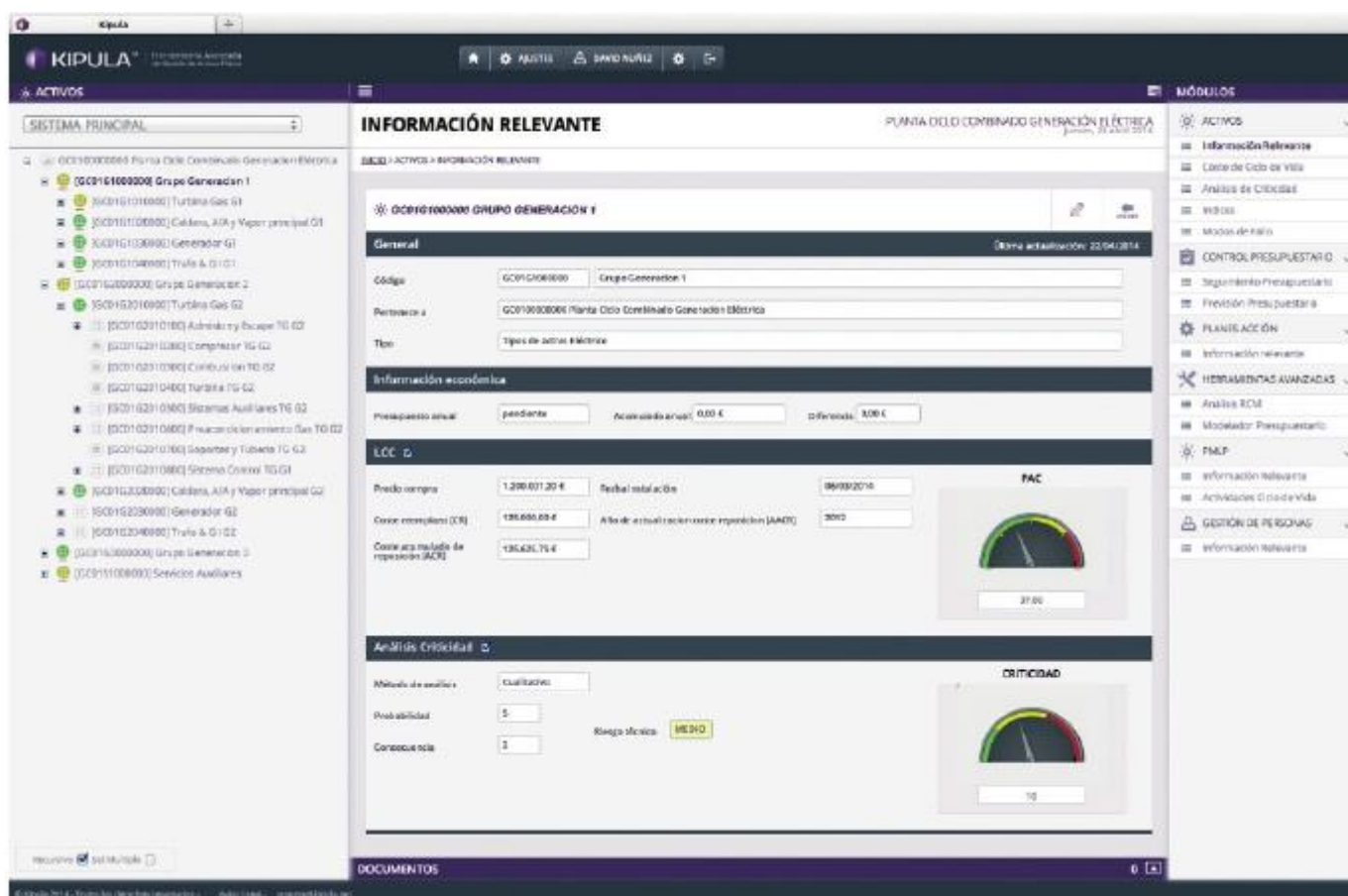
INNOVATIVE CONCEPT OF INTEGRATION

All the information entities, from the most basic, in which the technical aspect supersedes the economic one, to the most complex in which the gross figure is the most important, are integrated in a “net structure”, the tracking of these information entities being one aspect of this network structure. Hence, data are only typed once and are automatically transmitted through the different layers of information.



“CROSS VIEW”

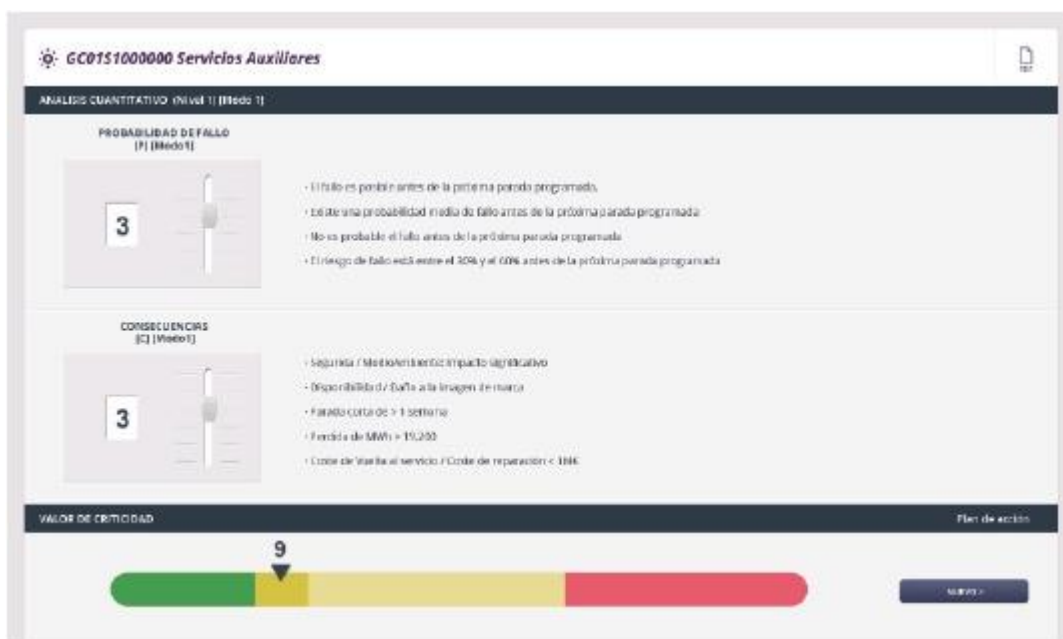
From the same window, one has access to the assets structure, the application modules and the documentation. When selecting the module and the asset, Kipula shows in the main window all the stored information that correspond to the selection required criteria. This smart browsing model permits the application user to intuitively look for any required data.





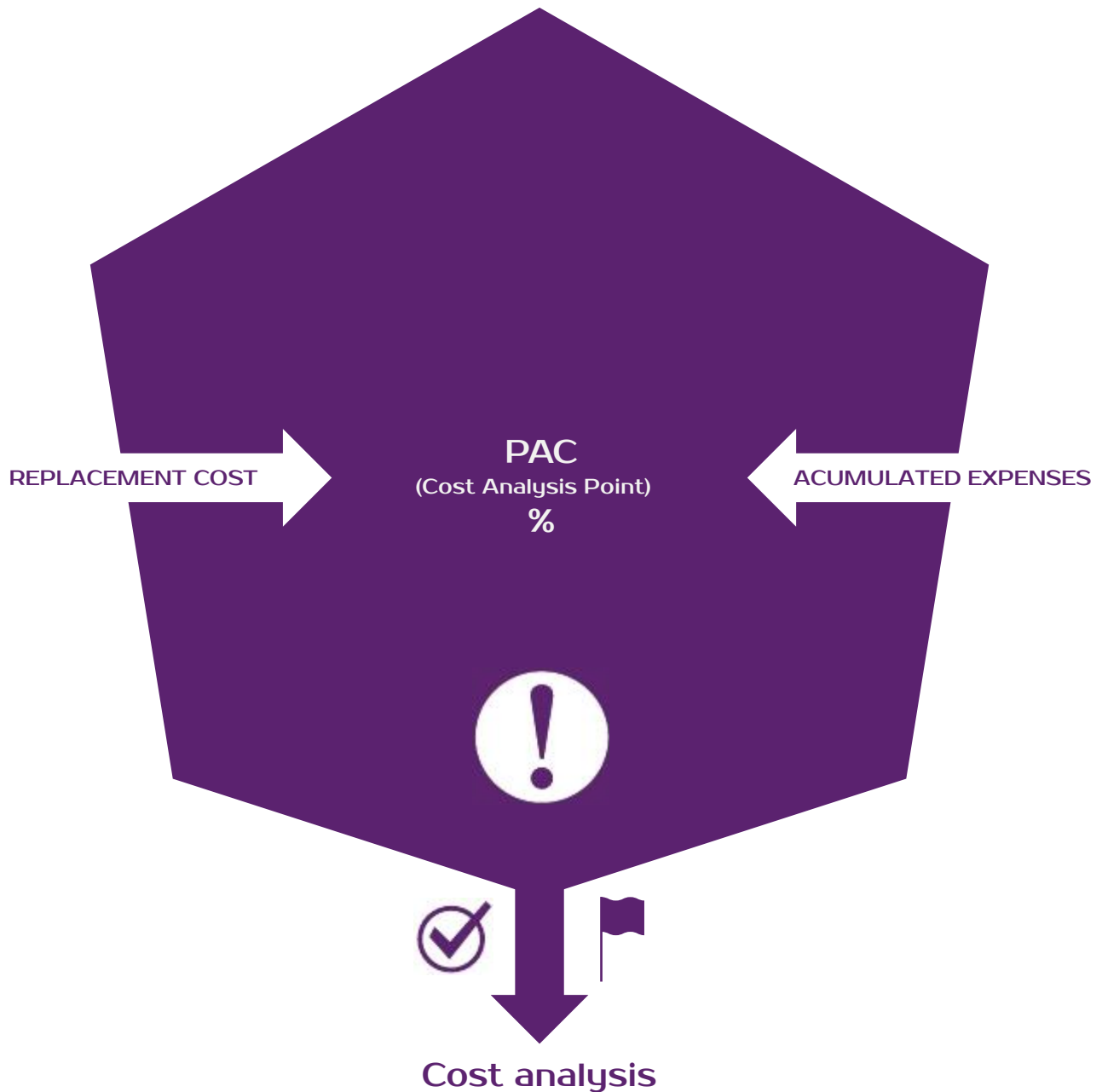
PRIORITISATION OF THE ACTIVITIES OF LIFE CYCLE

The impact on business continuity (availability, cost, legal compliance, etc.) caused by the failure of an asset and its likelihood to happen are the aspects evaluated for the calculation of the criticality of an asset.



MONITORING OF LIFE CYCLE COST

By using this technique, Kipula financially monitors those assets the user had defined by comparing the accumulated expenses with their replacement cost. When the prearranged alarm figure is reached, improvement plans or disincorporation are set out to carry out an economical and effective management.



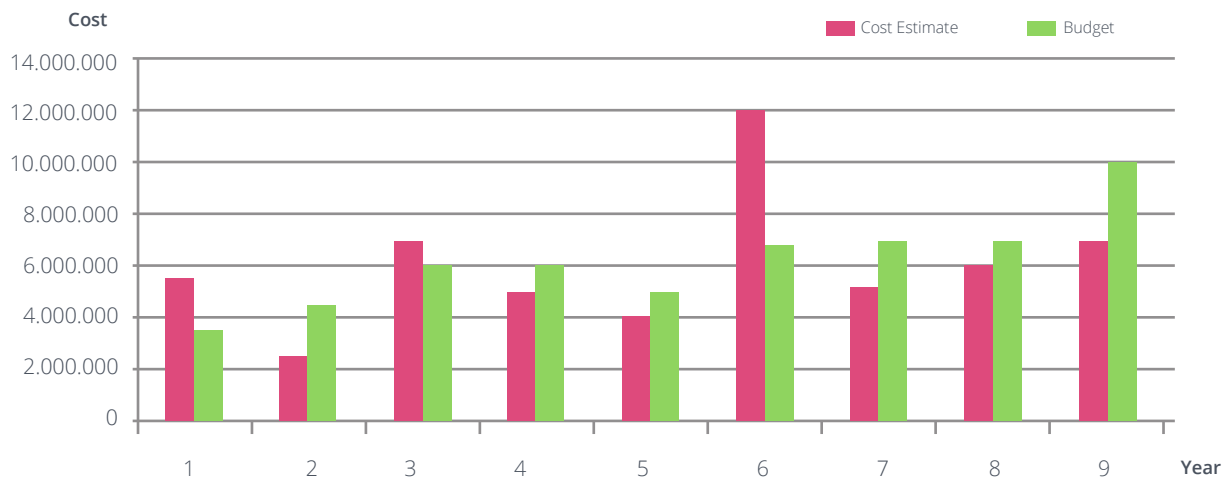
A CHANGE IN ASSET MANAGEMENT STRATEGY

Medium and long term perspective of physical assets management

Kipula allows to carry out a technically supported projection of the medium and long term overheads in the physical assets management.

Hence, what is obtained is:

- An optimal risk management.
- The optimization of the company resources.
- The best results.



Online Budget Monitoring

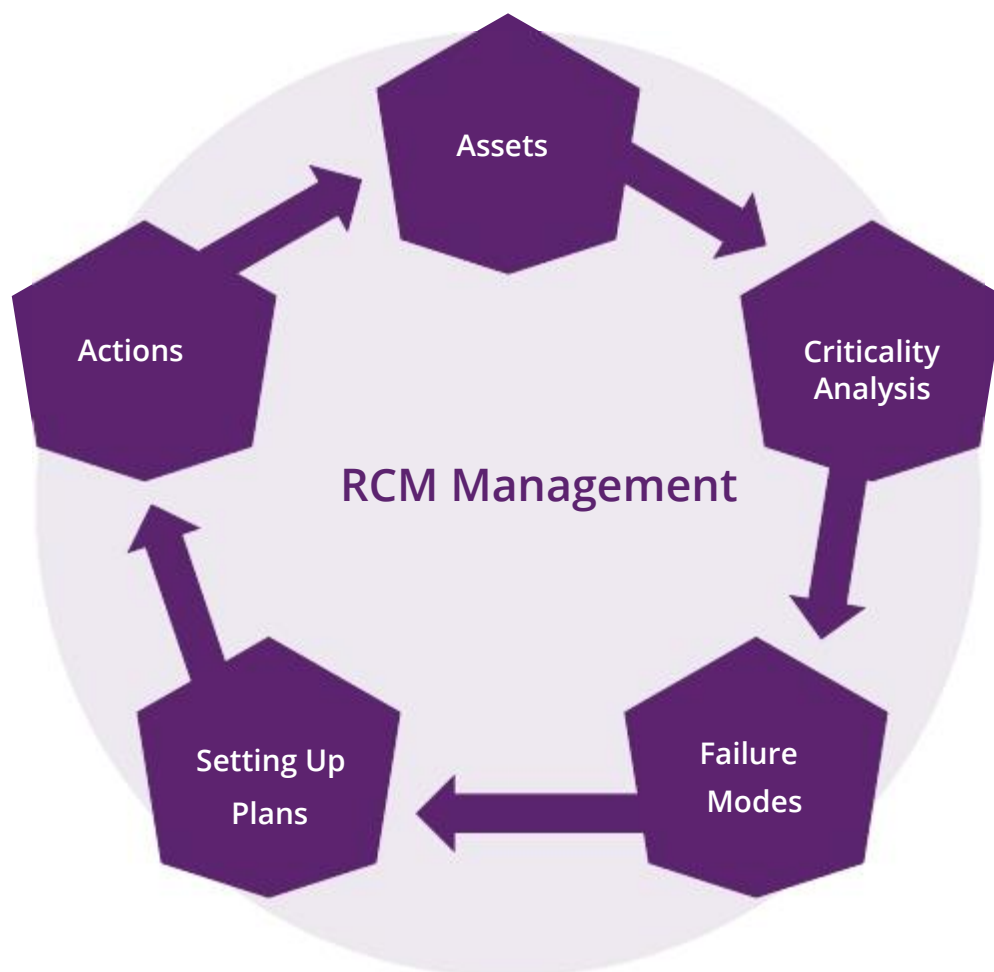
With a mere click, the management of the company gets a "real picture" of the accumulated overheads, a comparison of the approved budget and the perspective of the overhead in the physical assets management.



PHYSICAL ASSETS MANAGEMENT ADVANCED TOOLS

RCM Management

Kipula includes advanced management tools in the management of physical assets such as RCM, whose ultimate aim is a continuous improvement, allowing the user to deepen his/her knowledge of their assets and to establish concrete plans for improvement and monitoring associated with each asset.



Budget Developer

With the budget developer, Kipula allows the development of the Operational and Investment Budget in a determined financial period considering all entries of activities related to the life cycle of an asset.



TECHNICAL CHARACTERISTICS OF KIPULA SOFTWARE

This is an application designed to work on a WEB and on the operating environment IIS 7 or higher server. Base MS data SQLServer Std, with the option of using other managers databases (Oracle, MySQL).

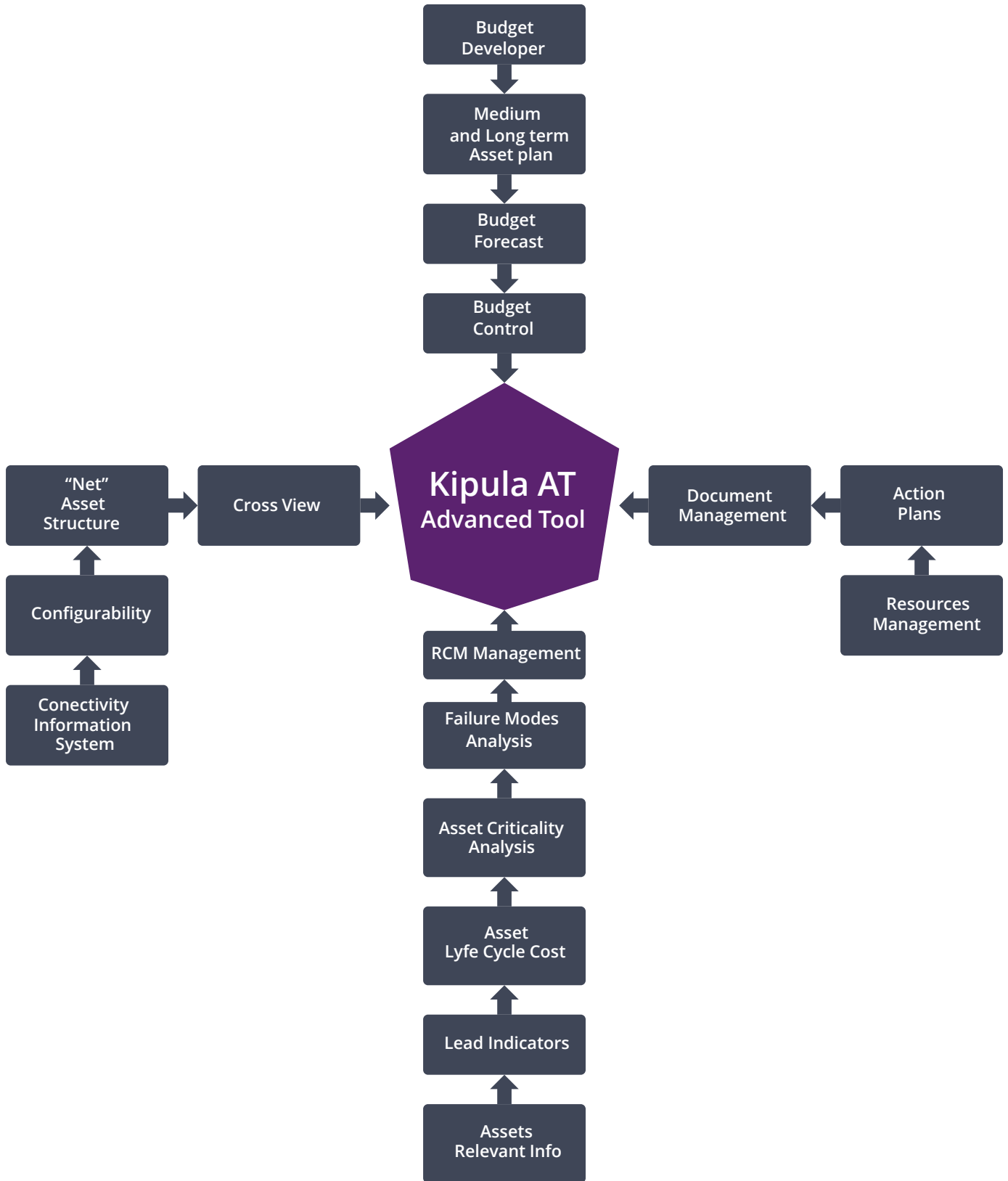
Other features:

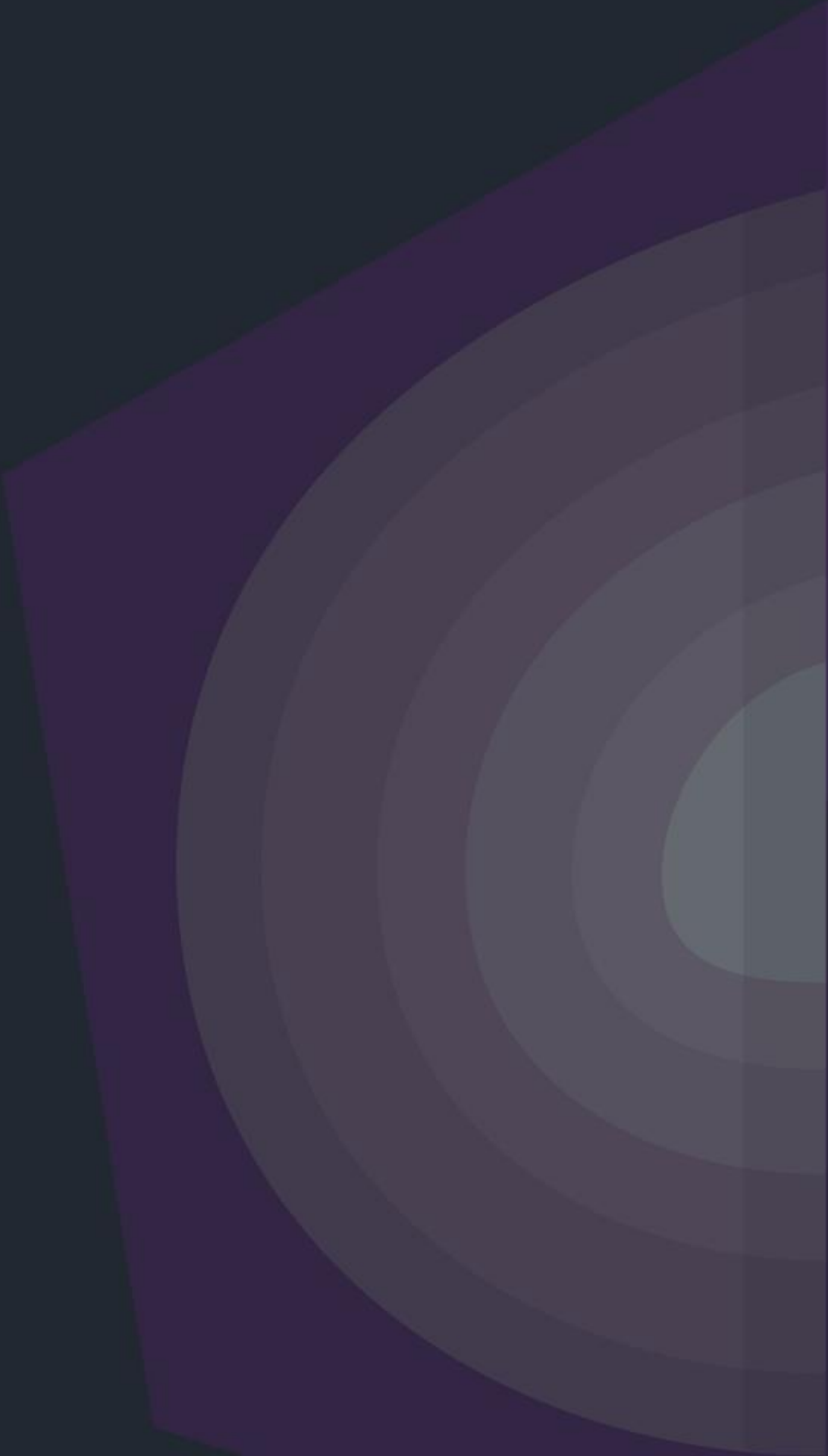
- Access and centralized administration.
- Intuitive graphical interface.
- Multi-language.
- Multi-centre (configuration by profiles).
- Support for W3C (display in different web browsers).

SETUP OPTIONS

- Solution installed on its own CPD. Using its own infrastructure to accommodate modules of the solution.
- Installed external CPD / Cloud solution. Hiring a space in an ISP.
- Solución SaaS (Software as a Service) Solution. Monthly rent proportional to the number of sites / users / assets using the hosted platform in the external Kipula CPD .

ESTRUCTURA DE MÓDULOS





KIPULA

Asset Management Advanced Tool

